

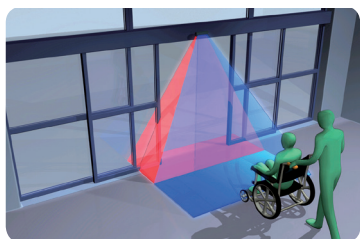


HR100-CT

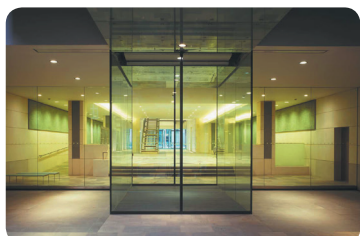
Activation + Monitored Safety



Advanced Unidirectional Detection Sensor with Monitored Safety and Unique “Door Learn” Ability



Pioneering super sensor offers pedestrian door activation and unprecedented safety at mounting heights of up to 3m

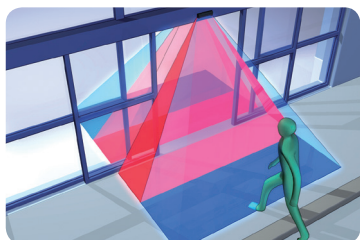


ENERGY EFFICIENT

Intelligent unidirectional detection ability reduces door hold open time by 20% and building energy loss by 6% in a standard installation

UNPARALLELED PEDESTRIAN SAFETY

Unique ability to memorise door motion allows the infrared safety curtain to be focused inside the moving door leaf resulting in unparalleled pedestrian safety



VERSATILE

Flexibility to adjust the door activation and pedestrian safety detection zones independently makes the HR100-CT the ideal sensor for every sliding door installation

EASE OF INSTALLATION

All the information necessary to install the HR100-CT sensor is printed on the sensor body



www.hotron.com

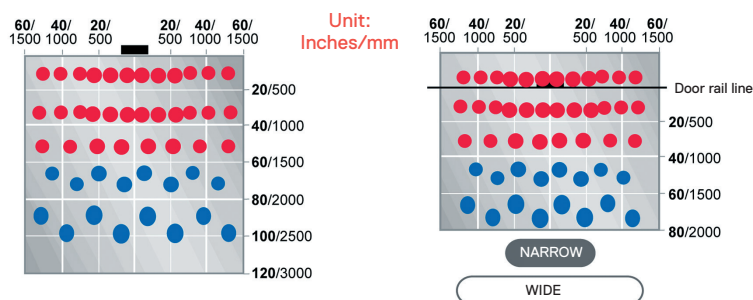
HOTRON

HR100-CT

Activation + Monitored Safety



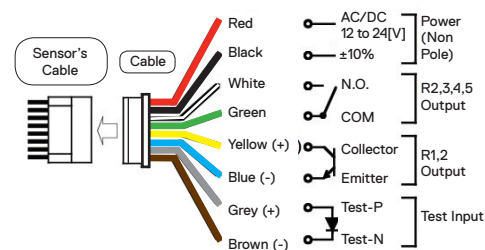
Detection Area (inches / millimetres)



Sensor back plate on:
Lever Arm: Inner 3 rows 8°
Lever Arm: Outer 2 rows 10°

Sensor back plate off:
Lever Arm: Inner 3 rows -8°
Lever Arm: Outer 2 rows 6°

Wiring Information

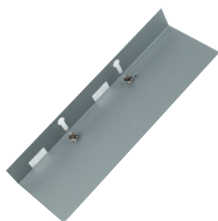


Technical Specifications

Model	HR100-CT Dual Relay Output Pedestrian Door Activation + Monitored Safety
Detection Method	Active Infrared Detection
Installation Height	2000mm to 3000mm (6.5ft to 10ft)
Sensor Dimensions	230mm (W), 70mm (H), 44mm (D)
Pattern Adjustment	Width Adjustment: Inner 3 rows Wide or Narrow Width Adjustment: Outer 2 rows Wide or Narrow Depth Adjustment: Inner 3 rows 0° - 8° Depth Adjustment: Outer 2 rows 0° - 10° Depth Adjustment: 1 to 5 rows of detection (Dip Switch)
Presence Timer	2sec, 30sec, 1min and infinity (Inner 3 rows) 1sec (Outer 2 rows)
IP Rating	54
Power Supply	12 to 24V AC or DC ± 10%
Power Consumption	AC12V-2.1 [VA] (Max), DC12V-110 [mA] (Max) AC24V-2.1 [VA] (Max), DC24V-60 [mA] (Max)
Output	Open Collector 7.5 [mA] (Min) Resistor Load
Relay Hold Time	Approx. 0.5 sec
LED Indication	Green Standby Blue ROW 4,5 Detecting Red ROW 1,2,3 Detecting
Operating Temperature	-20°C to +60°C, (-4°F to 140°F)
Weight	250g (0.55 lbs)
Available Colours	Black: Product Code = HR100-CT/BL Silver: Product Code = HR100-CT/S
Accessories Provided	2.5m Connection Cable, Mounting Template, Mounting Screws, Installation Instructions

Associated Accessories

Ceiling Attached Bracket
UTB-HR100



Ceiling Recessed Bracket
ITB-HR100



Sensor Cover
HT100-COV/BL (black)
HR100-COV/S (silver)



Black Weather Cover
WC/BL



Ceiling Recessed Bracket
HA-120



Spot-finder Installation Tool
BF-1

