



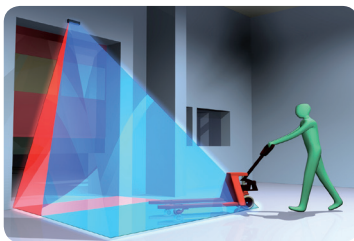
HR100-8m

Activation + Safety

Innovative Combined Activation & Safety for Small Industrial Doors



Independently adjustable door activation and pedestrian safety detection zones at mounting heights of up to 3m



TWO SENSORS IN ONE

Guarantee optimum door usage efficiency through separate adjustment of door activation and pedestrian safety detection zones

TIMELY DOOR OPENING

Ensure timely door opening with a detection area of 3m wide x 3m deep¹
¹ Installation height of 3m

MAXIMISE PEDESTRIAN SAFETY

Maintain full pedestrian safety in the door danger zone thanks to static presence detection technology

ELIMINATE DOOR/GOODS DAMAGE

Prevent door closures on static objects left in the door close zone by utilising the infinity presence timer setting



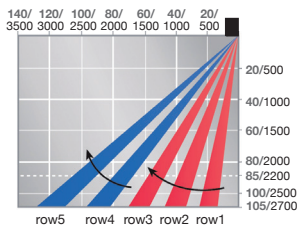
HR100-8m

Activation + Safety

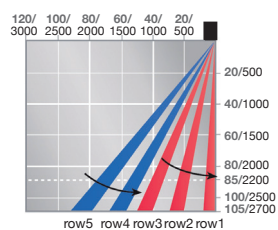


Detection Area inches / millimetres

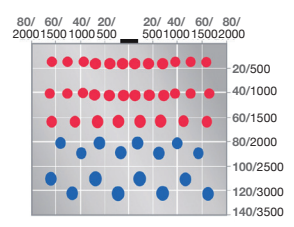
Side View (Max.) Unit (inches/mm)



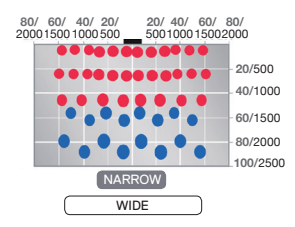
Side View (Min.) Unit (inches/mm)



Plan View (Max.)



Plan View (Min.)

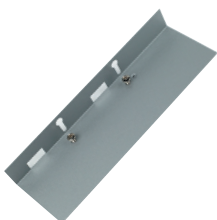


Technical Specifications

| | | |
|-----------------------|--|--|
| Model | HR100-8m (Single Relay) | |
| Detection Method | Active Infrared Detection | |
| Installation Height | 2000mm to 3000mm (6.5ft to 10ft) | |
| Sensor Dimensions | 230mm (W), 70mm (H), 44mm (D) | |
| Pattern Adjustment | Width Adjustment: Inner 3 rows Wide or Narrow Width Adjustment: Outer 2 rows Wide or Narrow Depth Adjustment: Inner 3 rows 0° - 8° Depth Adjustment: Outer 2 rows 0° - 10° Depth Adjustment: 1 to 5 rows of detection (Dip Switch) | |
| Presence Timer | 2sec, 15sec, 1min and infinity (Inner 3 rows) 2sec and 15sec (Outer 2 rows) | |
| IP Rating | 54 | |
| Power Supply | 12 to 24V AC or DC \pm 10% | |
| Power Consumption | AC12V-1.7 [VA] (Max), DC12V-110 [mA] (Max) AC24V-2.1 [VA] (Max), DC24V-60 [mA] (Max) | |
| Output Relay | Relay contact: DC50V 0.1A (Resistance Load) Relay is driven with "Fail Safe" concept | |
| Relay Hold Time | Approx. 0.5 sec | |
| LED Indication | Power On = Green Detecting = Red Detecting Door = Orange | |
| Operating Temperature | -20°C to +60°C, (-4°F to 140°F) | |
| Weight | 250g (0.55 lbs) | |
| Available Colours | Black | |
| Accessories Provided | 8m Connection Cable, Mounting Template, Mounting Screws, Installation Instructions | |

Associated Accessories

Ceiling Attached Bracket
UTB-HR100



Ceiling Recessed Bracket
ITB-HR100



Hotron Cable 8m
Cable-8M



Black Weather Cover
WC/BL

