

SSR-3V (Volt) SSR-3P (Pulse)



Dual Technology, Activation and Monitored Safety Sensor for Emergency Escape Route Doors.

Key Product Information:

- **EN 16005 and AutSchR Compliance**
Category 3 performance level D, sensor with a redundant activation output for compliance with DIN 18650:2010, EN 16005 and AutSchR.
- **Energy Efficient**
Intelligent unidirectional detection ability reduces door hold open time and building energy loss
- **Unparalleled Pedestrian Safety**
Unique ability to memorize door motion allows the infrared safety curtain to be focused inside the moving door leaf resulting in unparalleled pedestrian safety
- **Large Detection Zone**
Adjustable detection zone of 4m wide x 4m deep ensures timely door opening making this the ideal sensor for use in airports, supermarkets, shopping centres etc.
- **Ease of Installation**
All the information necessary to install the SSR-3 sensor is printed on the sensor body

A) ****Note**** In some countries, for example the UK, emergency exit/escape route certified sensors are not a requirement as local building regulations take precedence over EN16005 and stipulate this fact. It is therefore prudent for door installation companies to consult with your local automatic door association (or) building regulatory body to ascertain your obligations in this area.

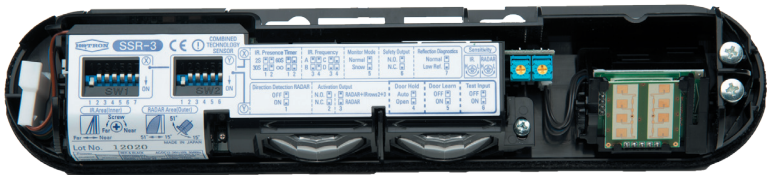
www.hotronsensors.com

HOTRON

INSPIRING CONFIDENCE

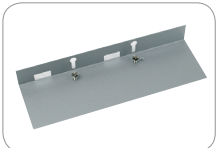
SSR-3V (Volt) SSR-3P (Pulse)

Activation + Monitored Safety



Technical Specification

Accessories



UTB-HR100
Ceiling attached bracket



SSR-3-COV/BL
Black sensor cover
SSR-3-COV/S
Silver sensor cover



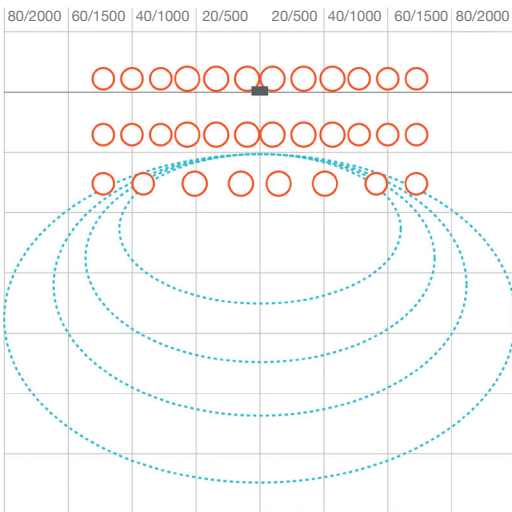
WC/BL
Black weather cover



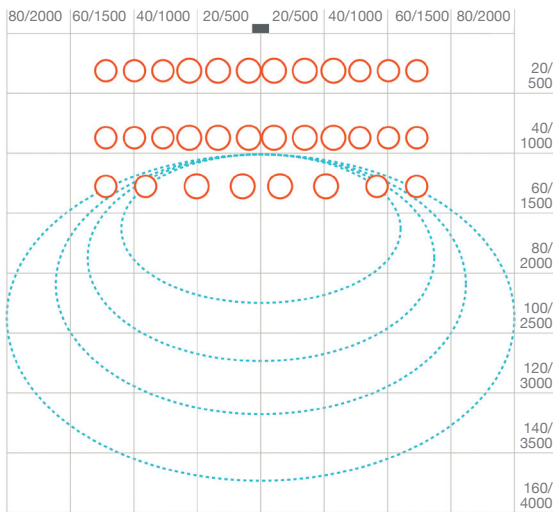
BF-1
Spot-finder installation tool

Model	SSR-3 (V) & (P) Emergency Exit / Escape Route Sensors	
Detection Method	Microwave Motion Detection K-Band 24.15Ghz + Active Infrared Detection	
Installation Height	2000mm to 3200mm (6.5ft to 10.5ft)	
Sensor Dimensions	265mm (W), 60mm (H), 43mm (D)	
Pattern Adjustment	Width Adjustment: Microwave Sensitivity Adjustment (Potentiometer)	
	Depth Adjustment: Active Infrared 3 rows +4° to - 8° (Screw)	
	Depth Adjustment: Microwave Antenna Adjustment up/down +5° to +45° in 3° steps	
	Depth Adjustment: Microwave Sensitivity Adjustment (Potentiometer)	
Presence Timer	2sec, 30sec, 1min and infinity (Active Infrared 3 rows)	
IP Rating	54	
Power Supply	12 to 24V AC or DC \pm 10%	
Power Consumption	AC12V-2.5 [VA] (Max), DC12V-150 [mA] (Max)	
	AC24V-2.5 [VA] (Max), DC24V-80 [mA] (Max)	
Relay Hold Time	Active Infrared: 0.5 sec approx.	
	Microwave: 1.5 sec	
LED Indication	Power On	= Green
	Doorway Learning	= Green Blinking
	Active Infrared and Microwave Detecting	= Red
	Microwave Detecting	= Blue
	Active Infrared Detecting	= Red
	Detecting Door	= Orange
	Internal Sensor Error	= Green/Red blinks alternately (Fast)
	Low Reflection Level Error	= Green/Red blinks alternately (Slow)
	Dipswitch settings are being changed	= Orange blinking (Fast)
	Door Hold	= Orange blinking (Slow)
Operating Temperature	-20°C to +60°C, (-4°F to 140°F)	
Weight	254g (0.56 lbs)	
Available Colours	Black: Product Code	= SSR-3/BL
	Silver: Product Code	= SSR-3/S
Accessories Provided	2.5m, Connection Cable, Mounting Template, Mounting Screws, Installation Instructions, Detection Area Mask	

Detection Area (inches/mm)



Infrared: 3 rows -8°
Microwave: antenna 45°



Infrared: 3 rows 4°
Microwave: antenna 51°